

GLAZED PORCELAIN STONEWARE + STD BODY + RECTIFIED + MATT  
GRES PORCELÁNICO ESMALTADO + PASTA STD + RECTIFICADO + MATE



90x90 cm/36"x36" + 60x120 cm/24"x48" + 60x60 cm/24"x24"



GRAVITY NICKEL



GRAVITY TITANIUM



GRAVITY IRON



GRAVITY GOLD



GRAVITY OXIDE

GRADONE STRAIR  
PELDAÑO GRADONE

30x60 cm/118"x24"	2
30x90 cm/118"x36"	2
30x120 cm/118"x48"	2

STRAIR TREAD  
PELDAÑO ROMO

30x60 cm/118"x24"	6
30x90 cm/118"x36"	3
30x120 cm/118"x48"	3

SKIRTING  
KOSPIFFE

9x60 cm/35"x24"	15
9x90 cm/35"x36"	11
9x120 cm/35"x48"	10

AVAILABLE FORMATS / FORMATOS DISPONIBLES:

PIECES NAME NOMBRE DE LA PIEZA	SIZES FORMATOS (cm)	WORK SIZE DIMENSION DE FABRICACION (mm)	BOX   CAJA			PALLET   PALET			
			PIECES PIEZAS	sqm m <sup>2</sup>	MAX AVERAGE WEIGHT PESO MEDIO MAXIMO (kg)	BOXES CAJAS	sqm m <sup>2</sup>	MAX AVERAGE WEIGHT PESO MEDIO MAXIMO (kg)	SIZE PALLET FORMATO DEL PALET (mm)
GRAVITY	90x90 RC	900 x 900 x 10,5	2	1,620	40,000	27	43,740	1140	950x1060x820
GRAVITY	60x120 X3 RC	600 x 1200 x 9	2	1,440	28,000	36	51,840	1092	840x1200x740
GRAVITY	60x60 SL RC	600 x 600 x 9	4	1,440	27,000	32	46,080	950	800x1200x740

GRAVITY OXIDE  
90x90 cm/36"x36" RC

METAL  
METALES



# GRAVITY

WALL TILE + WHITE BODY + RECTIFIED + MATT  
AZULEJO + PASTA BLANCA + RECTIFICADO + MATE

30x90 cm/11.8"x36"



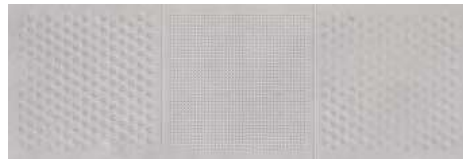
GRAVITY NICKEL



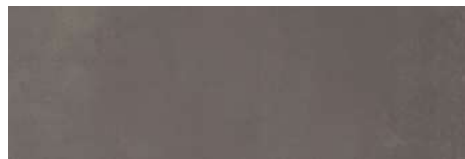
GRAVITY LANCER NICKEL



GRAVITY TITANIUM



GRAVITY LANCER TITANIUM



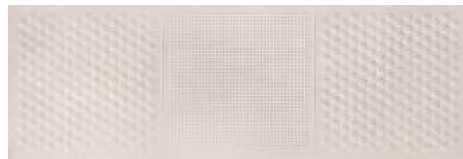
GRAVITY IRON



GRAVITY LANCER IRON



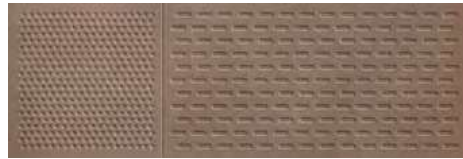
GRAVITY GOLD



GRAVITY LANCER GOLD



GRAVITY OXIDE



GRAVITY LANCER OXIDE

AVAILABLE FORMATS / FORMATOS DISPONIBLES:

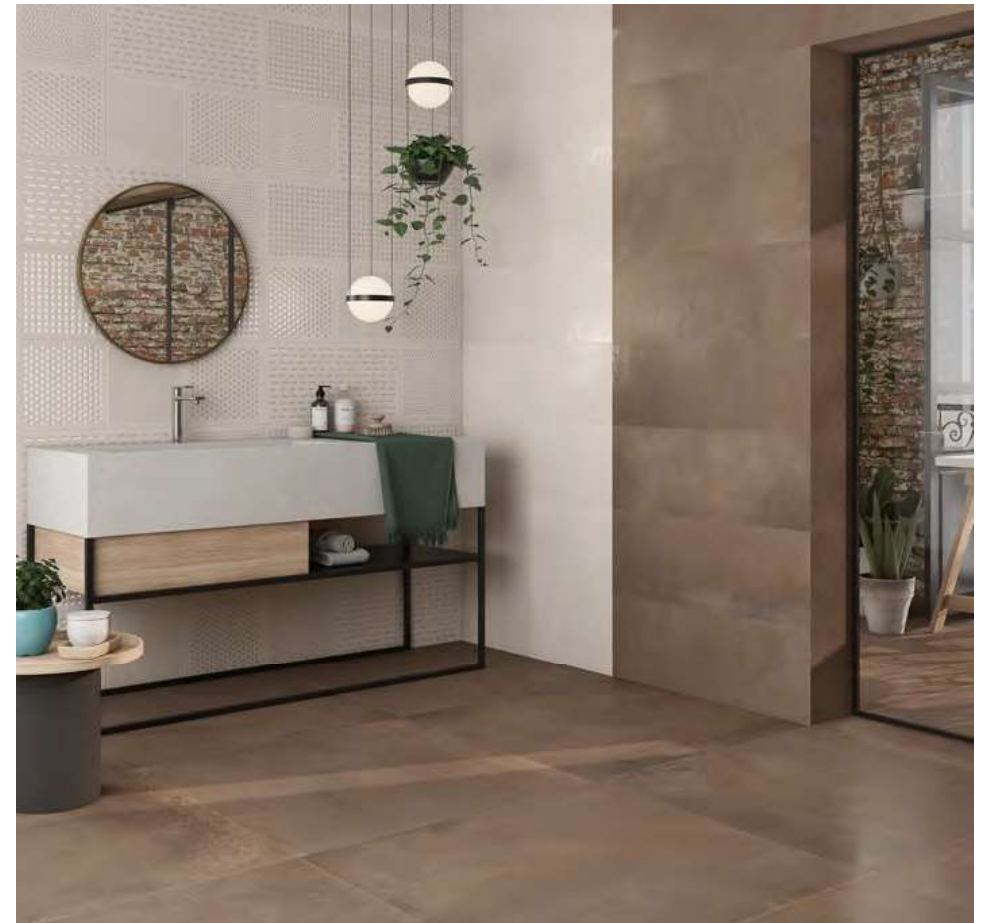
PIECES NAME NOMBRE DE LA PIEZA	SIZES FORMATOS (cm)	WORK SIZE DIMENSION DE FABRICACION (mm)	PIECES PIEZAS	BOX   CAJA		PALLET   PALET			
				sqm m <sup>2</sup>	MAX. AVERAGE WEIGHT PESO MEDIO MAXIMO (kg)	BOXES CAJAS	sqm m <sup>2</sup>	MAX. AVERAGE WEIGHT PESO MEDIO MAXIMO (kg)	SIZE PALLET FORMATO DEL PALET (mm)
<b>GRAVITY</b>	30x90 RC	300 x 900 x 8,7	5	1,350	22,000	63	85,050	1294	920x1230x1040
<b>GRAVITY LANCER</b>	30x90 RC	300 x 900 x 10,8	4	1,080	22,000	63	68,040	1219	920x1230x1040

GRAVITY OXIDE / GOLD  
30x90 cm/11.8"x36" RC

GRAVITY LANCER GOLD  
30x90 cm/11.8"x36" RC

GRAVITY OXIDE  
90x90 cm/36"x36" RC

METAL  
METALES



GLAZED PORCELAIN STONEWARE + STD BODY + RECTIFIED + MATT  
GRES PORCELÁNICO ESMALTADO + PASTA STD + RECTIFICADO + MATE

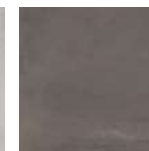
90x90 cm/36"x36" + 60x120 cm/24"x48" + 60x60 cm/24"x24"



GRAVITY NICKEL



GRAVITY TITANIUM



GRAVITY IRON



GRAVITY GOLD



GRAVITY OXIDE

# GRAVITY

WALL TILE + WHITE BODY + MATT  
AZULEJO + PASTA BLANCA + MATE

20x60 cm/8"x24"

BIII GL  



GRAVITY NICKEL



GRAVITY LANCER NICKEL



GRAVITY TITANIUM



GRAVITY LANCER TITANIUM



GRAVITY IRON



GRAVITY LANCER IRON



GRAVITY GOLD



GRAVITY LANCER GOLD



GRAVITY OXIDE



GRAVITY LANCER OXIDE

GRAVITY TITANIUM  
20x60 cm/8"x24"



GRAVITY LANCER TITANIUM  
20x60 cm/8"x24"



METAL  
METALES



GLAZED PORCELAIN STONEWARE + STD BODY + RECTIFIED + MATT  
GRES PORCELÁNICO ESMALTADO + PASTA STD + RECTIFICADO + MATE

90x90 cm/36"x36" + 60x120 cm/24"x48" + 60x60 cm/24"x24"

Bla GL   2

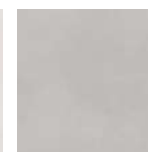


AVAILABLE FORMATS / FORMATOS DISPONIBLES:

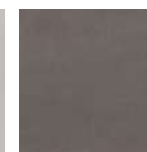
PIECES NAME NOMBRE DE LA PIEZA	SIZES FORMATOS (cm)	WORK SIZE DIMENSION DE FABRICACION (mm)	BOX   CAJA			PALLET   PALET			
			PIECES PIEZAS	sqm m <sup>2</sup>	MAX. AVERAGE WEIGHT PESO MEDIO MÁXIMO (kg)	BOXES CAJAS	sqm m <sup>2</sup>	MAX. AVERAGE WEIGHT PESO MEDIO MÁXIMO (kg)	SIZE PALLET FORMATO DEL PALET (mm)
GRAVITY	20x60	200 x 601 x 9	10	1,200	19,500	64	76,800	1170	800x1200x940
GRAVITY LANCER	20x60	200 x 601 x 9	10	1,200	19,500	64	76,800	1170	800x1200x940



GRAVITY NICKEL



GRAVITY TITANIUM



GRAVITY IRON



GRAVITY GOLD



GRAVITY OXIDE