

# RUST

GLAZED PORCELAIN STONEWARE + STD BODY + RECTIFIED + MATT  
GRES PORCELÁNICO ESMALTADO + PASTA STD + RECTIFICADO + MATE

60x60 cm/24"x24" + 30x60 cm/11.8"x24"

Bla GL   1



RUST WHITE



RUST STEEL



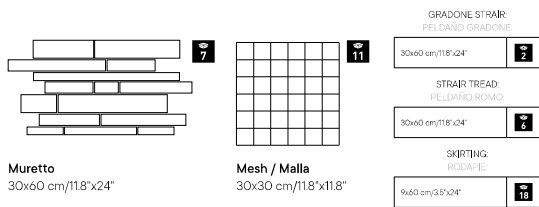
RUST IRON



RUST BEIGE



RUST COPPER



AVAILABLE FORMATS / FORMATOS DISPONIBLES:

PIECES NAME NOMBRE DE LA PIEZA	SIZES FORMATOS (cm)	WORK SITE DIMENSION DE FABRICACION (mm)	BOX   CAJA			PALLET   PALET			
			PIECES PIEZAS	sqm m <sup>2</sup>	MAX. AVERAGE WEIGHT PESO MEDIO MÁXIMO (kg)	BOXES CAJAS	sqm m <sup>2</sup>	MAX. AVERAGE WEIGHT PESO MEDIO MÁXIMO (kg)	SIZE PALLET FORMATO DEL PALET (mm)
<b>RUST</b>	60x60 SL RC	600 x 600 x 9	4	1,440	27,000	32	46,080	950	800x1200x740
<b>RUST</b>	30x60 SL RC	298 x 600 x 9	8	1,440	27,000	40	57,600	1140	800x1200x740

RUST COPPER  
60x60 cm/24"x24" RC  
↘

METAL  
METALES



# RUST

WALL TILE + WHITE BODY + RECTIFIED + MATT  
AZULEJO + PASTA BLANCA + RECTIFICADO + MATE

40x120 cm/16"x48"



RUST WHITE



SCRAPED WHITE



RUST STEEL



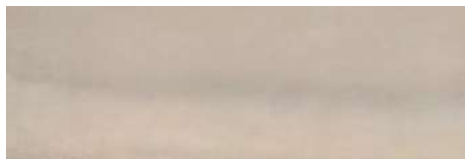
SCRAPED STEEL



RUST IRON



SCRAPED IRON



RUST BEIGE



SCRAPED BEIGE



RUST COPPER



SCRAPED COPPER

AVAILABLE FORMATS / FORMATOS DISPONIBLES:

PIECES NAME NOMBRE DE LA PIEZA	SIZES FORMATOS (cm)	WORK SIZE DIMENSION DE FABRICACION (mm)	PIECES PIEZAS	BOX   CAJA		PALLET   PALET			
				sqm m <sup>2</sup>	MAX. AVERAGE WEIGHT PESO MEDIO MAXIMO (kg)	BOXES CAJAS	sqm m <sup>2</sup>	MAX. AVERAGE WEIGHT PESO MEDIO MAXIMO (kg)	SIZE PALLET FORMATO DEL PALET (mm)
<b>RUST</b>	40x120 RC	400 x 1200 x 10,8	3	1,440	28,000	20	28,800	562	800x1200x540
<b>SCRAPED</b>	40x120 RC	400 x 1200 x 10,8	3	1,440	28,000	20	28,800	562	800x1200x540

RUST BEIGE  
40x120 cm/16"x48" RC  
↘

SCRAPED BEIGE  
40x120 cm/16"x48" RC  
↘

RUST COPPER  
60x60 cm/24"x24" RC  
↘

METAL  
METALES



GLAZED PORCELAIN STONEWARE + STD BODY + RECTIFIED + MATT  
GRES PORCELÁNICO ESMALTADO + PASTA STD + RECTIFICADO + MATE

60x60 cm/24"x24" + 30x60 cm/11.8"x24"



RUST WHITE



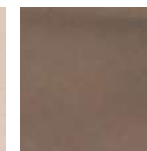
RUST STEEL



RUST IRON



RUST BEIGE



RUST COPPER

# RUST

WALL TILE + WHITE BODY + RECTIFIED + MATT  
AZULEJO + PASTA BLANCA + RECTIFICADO + MATE

30x60 cm/11.8"x24"



RUST WHITE



SCRAPED WHITE



RUST STEEL



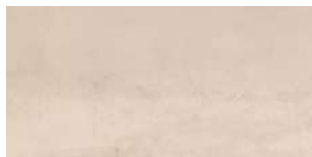
SCRAPED STEEL



RUST IRON



SCRAPED IRON



RUST BEIGE



SCRAPED BEIGE



RUST COPPER



SCRAPED COPPER

AVAILABLE FORMATS / FORMATOS DISPONIBLES:

PIECES NAME NOMBRE DE LA PIEZA	SIZES FORMATOS (cm)	WORK SIZE DIMENSION DE FABRICACION (mm)	BOX   CAJA		PALLET   PALET				
			PIECES PIEZAS	sqm m <sup>2</sup>	MAX AVERAGE WEIGHT PESO MEDIO MAXIMO (kg)	BOXES CAJAS	sqm m <sup>2</sup>	MAX AVERAGE WEIGHT PESO MEDIO MAXIMO (kg)	SIZE PALLET FORMATO DEL PALET (mm)
<b>RUST</b>	30x60 RC	300 x 600 x 8.5	9	1,620	24,000	48	77,760	1170	800x1200x1040
<b>SCRAPED</b>	30x60 RC	300 x 600 x 9.7	8	1,440	24,000	48	69,120	1114	800x1200x1040

RUST WHITE  
30x60 cm/11.8"x24" RC  
↘

SCRAPED WHITE  
30x60 cm/11.8"x24" RC  
↘

RUST STEEL  
60x60 cm/24"x24" RC  
↘

METAL  
METALES

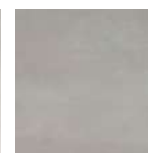


GLAZED PORCELAIN STONEWARE + STD BODY + RECTIFIED + MATT  
GRES PORCELÁNICO ESMALTADO + PASTA STD + RECTIFICADO + MATE

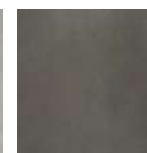
60x60 cm/24"x24" + 30x60 cm/11.8"x24"



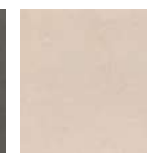
RUST WHITE



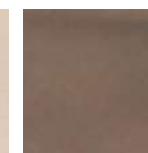
RUST STEEL



RUST IRON



RUST BEIGE



RUST COPPER